

# FinScan

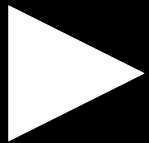
S M A R T P O W E R



PRODUCT CATALOGUE



# INTELLICORE



## Our Goal

Is to provide exceptional service to our customers, and deliver the most advanced distributed power and automation solutions available.

Our development effort is dynamic, and evolving. With a strong focus on seamless integration into other onboard systems whilst maintaining an easy to use, uncomplicated user interface.

FinScan systems are engineered and designed with “Out of the square” forward thinking. We are constantly improving and innovating our technology and processes to achieve more efficiency and cost effectiveness for our customers and end users.

Switching, monitoring and controlling various systems from one touch screen has never been easier.

We call it “Intelligence at your fingertips”

**YOUR PARTNER IN POWER**



INTELLICORE



PROVEN



SMART POWER



RELIABILITY

# SCREEN Design



NO LIMITS  
in design and functionality

# LIGHTING control



## SIMPLE operation



Complex lighting arrangements are not uncommon on most yachts. With vast improvements in efficiency due to advancement in LED technology, lighting installations on yachts are not just a necessity, but a complete package that include mood lighting above and below the water line.

IntelliCORE is designed, with complex lighting in mind. With optional advanced dimming features supporting the latest LED technologies. The IntelliCORE system has purpose built customs screens, and IntelliCORE FLEX screens available to perform white dimming, or three colour dimming and color change.

Complete lighting control from one screen, inside or outside. Now that makes sense !

# USER interface



## ONE PICTURE tells a thousand words

In any control system, the user interface is one of the most important components of the system. If a system is too complex, and presenting more information than what the user needs to see, confusion, and frustration can occur.

The IntelliCORE user interface utilizes state of the art, full colour touch screens, that allow the flexibility to create superior, boat model specific screens, with as much , or as little information that is wanted.

One of the key advantages of the IntelliCORE system, is the user interface. The IntelliCORE system is not boxed into a "ONE MENU SYSTEM FOR ALL" approach. Instead, the custom IntelliCORE system can be enhanced with boat specific imagery to suit the boat design. With simple, flowing screens and vivid colour graphics. Intelligent , efficient switching screens can be designed to emulate the actual installation.

Circuits can be found, and button's pressed when you need them,

*FAST.*



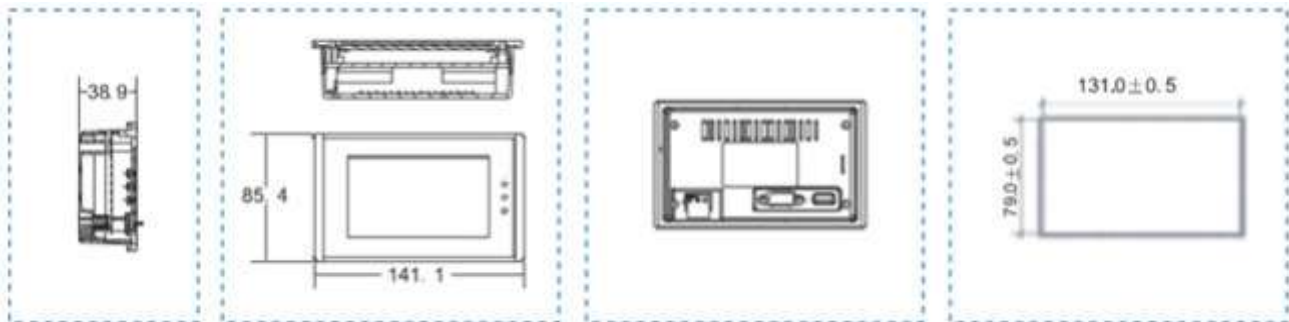
# TOUCHSCREEN TSC-43



**4.3 INCH  
SCREEN**

**IP65  
RATED**

**MULTILINK  
SLAVE**



## General Specifications

Input Voltage	12 – 28V DC
Current consumption	130mA
Operating Temperature	-20 to 60 °C
IP Rating	IP65
Screen type	65535 true colour
Screen size	4.3 inch
Resolution	480 x 272
Contrast	Non adjustable
Touch panel	4 – wire resistive
Approvals	CE
Included	Mounting accessories and iCORE Input unit communication cable

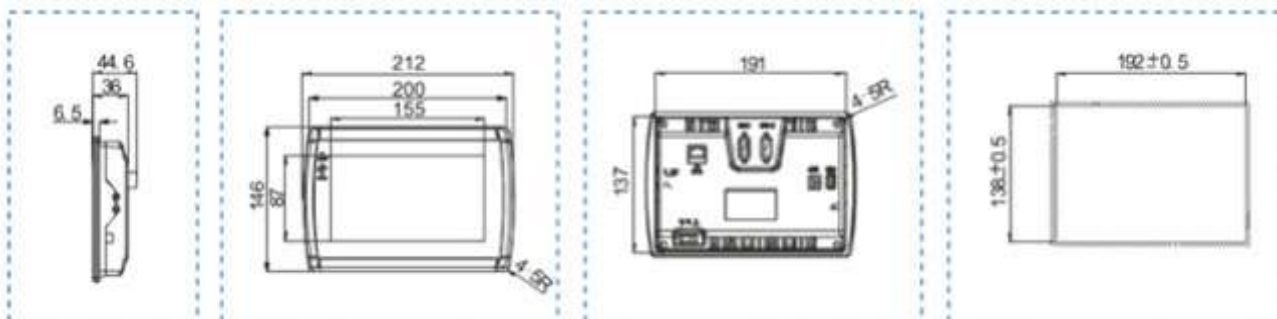
# TOUCHSCREEN TSC—70



**7 INCH  
SCREEN**

**IP65  
RATED**

**MULTILINK  
MASTER / SLAVE**



## General Specifications

Input Voltage	12 – 28V DC
Current consumption	250mA
Operating Temperature	-20 to 60 °C
IP Rating	IP65
Screen type	65535 true colour
Screen size	7 inch
Resolution	800 x 480
Contrast	Non adjustable
Touch panel	4 – wire resistive
Approvals	CE
Included	Mounting accessories and iCORE Input unit communication cable
Mounting cutout dimensions	192mm x 139mm
TouchScreen dimensions	204mm x 151mm x 44 mm

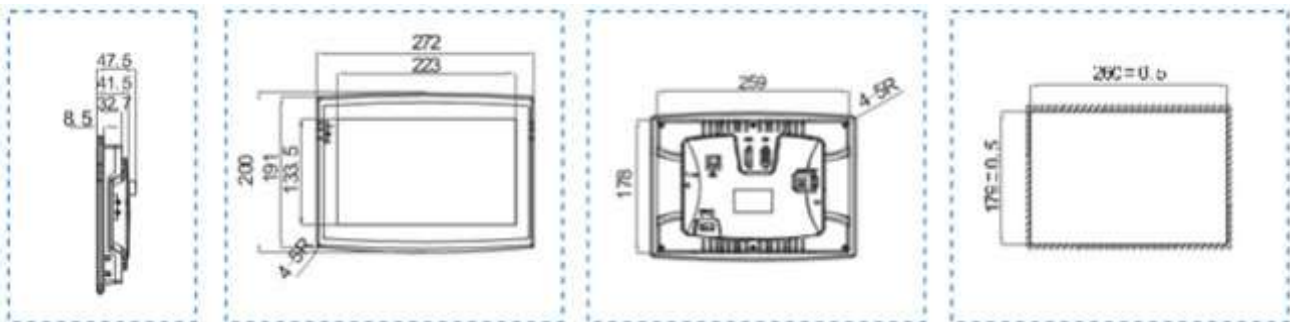
# TOUCHSCREEN TSC—101



**10.1 INCH  
SCREEN**

**IP65  
RATED**

**MULTILINK  
MASTER / SLAVE**



## General Specifications

Input Voltage	12 – 28V DC
Current consumption	230mA
Operating Temperature	-20 to 60 °C
IP Rating	IP65
Screen type	65535 true colour
Screen size	10.1 inch
Resolution	800 x 480
Contrast	Non adjustable
Touch panel	4 – wire resistive
Approvals	CE
Included	Mounting accessories and iCORE Input unit communication cable

# INTELLICORE F L E X

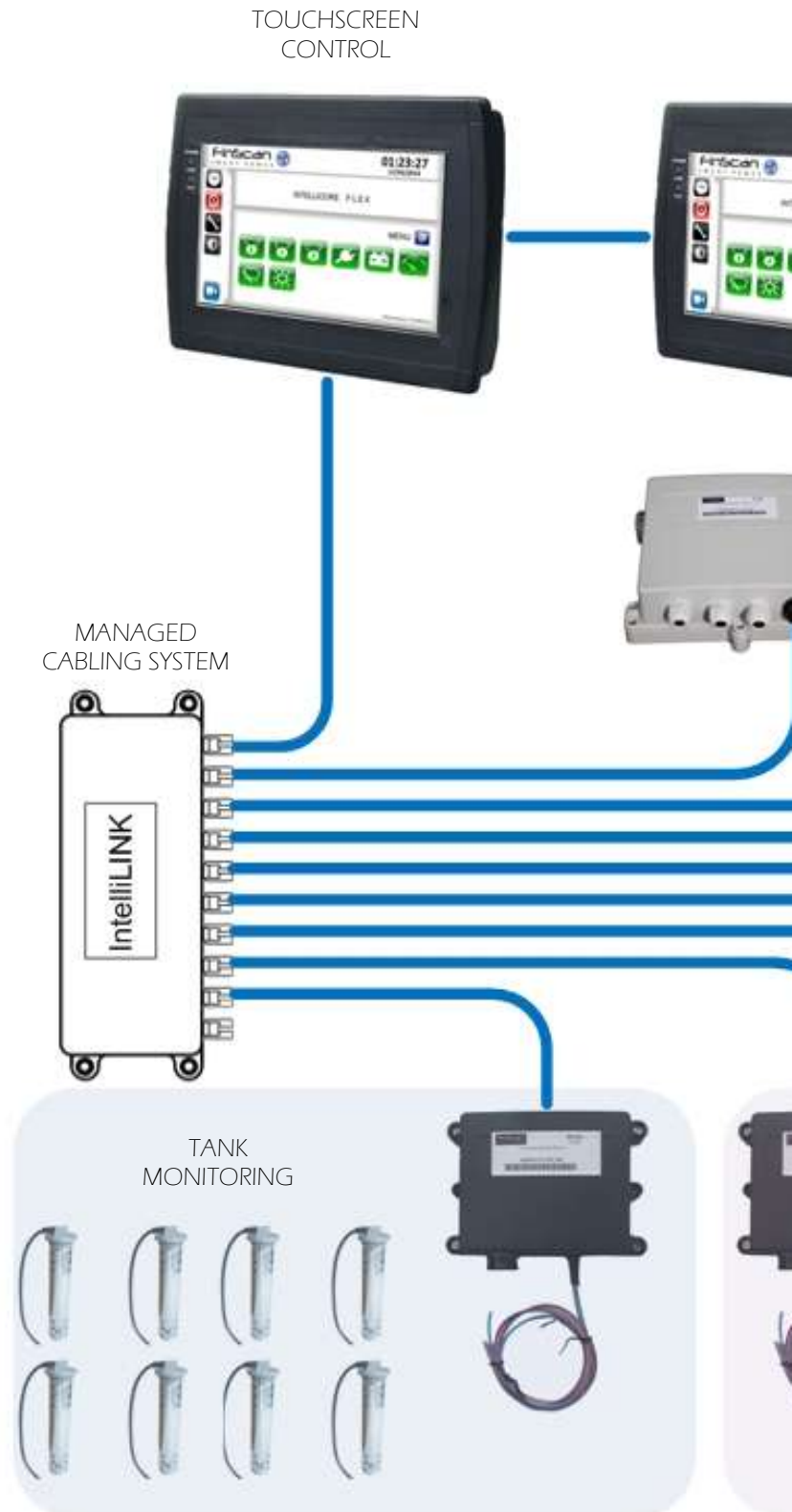


Experience what IntelliCORE F L E X is all about. Designed for easy installation , and on screen setup, the F L E X system boasts an intuitive array of configurable standard screens to perform every marine function imaginable. From basic switching to dedicated screens for intermittent wipers and dimming.

IntelliCORE F L E X allows dynamic setup of modes to suit any installation. Modes can be used to control groups of lights or power with one button press.

## Connect . . . .

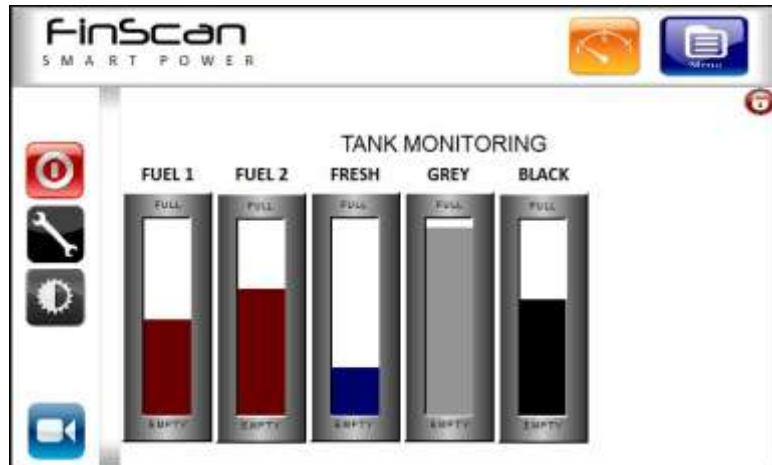
- ➔ Networked screens
- ➔ Control up to 48 x DC circuits
- ➔ Control up to 16 x AC circuits
- ➔ Auto Shore/Gen transfer
- ➔ Reverse polarity protection
- ➔ Monitor AC volts and amps
- ➔ Monitor up to 8 x tanks
- ➔ Monitor charge and discharge
- ➔ Monitor RES / 0-5V / 0-10V senders
- ➔ Monitor up to 4 x voltages  
Amps , displaying state of charge , and amp hours  
Plug and Play IntelliBUS



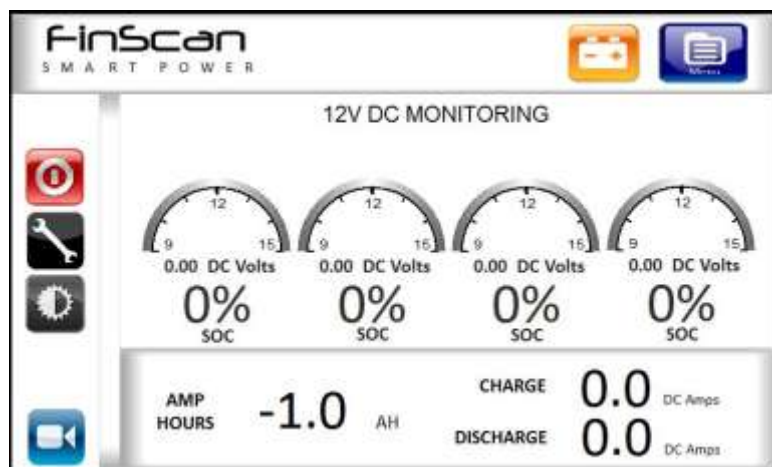
# GIVES YOU THE POWER



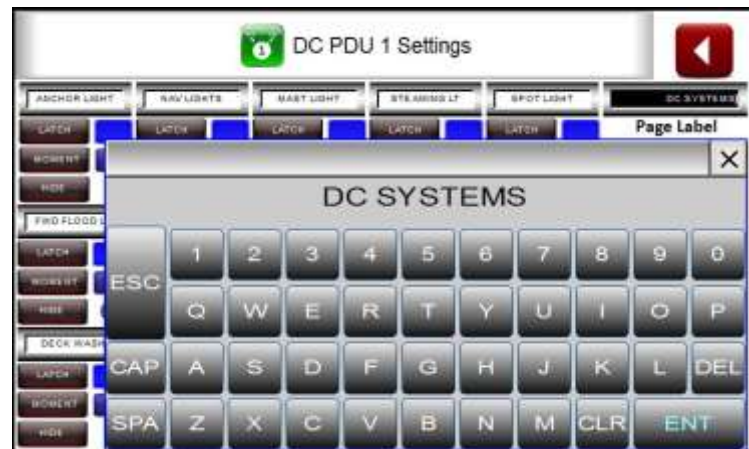
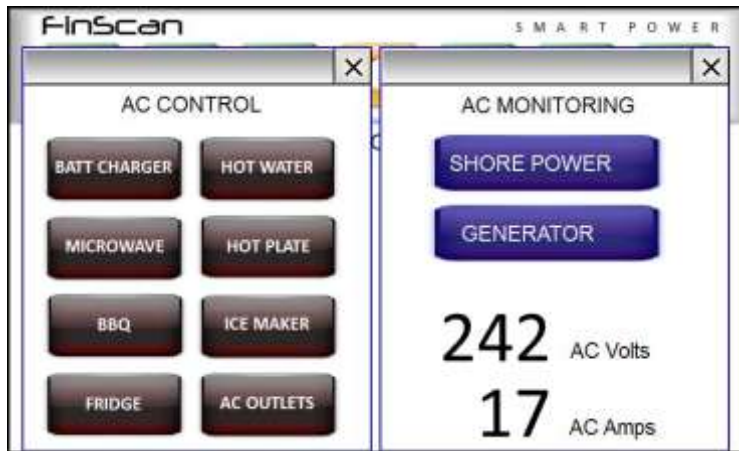
# INTELLICORE F L E X



CE FC



# GIVES YOU THE POWER



# DC POWER distribution



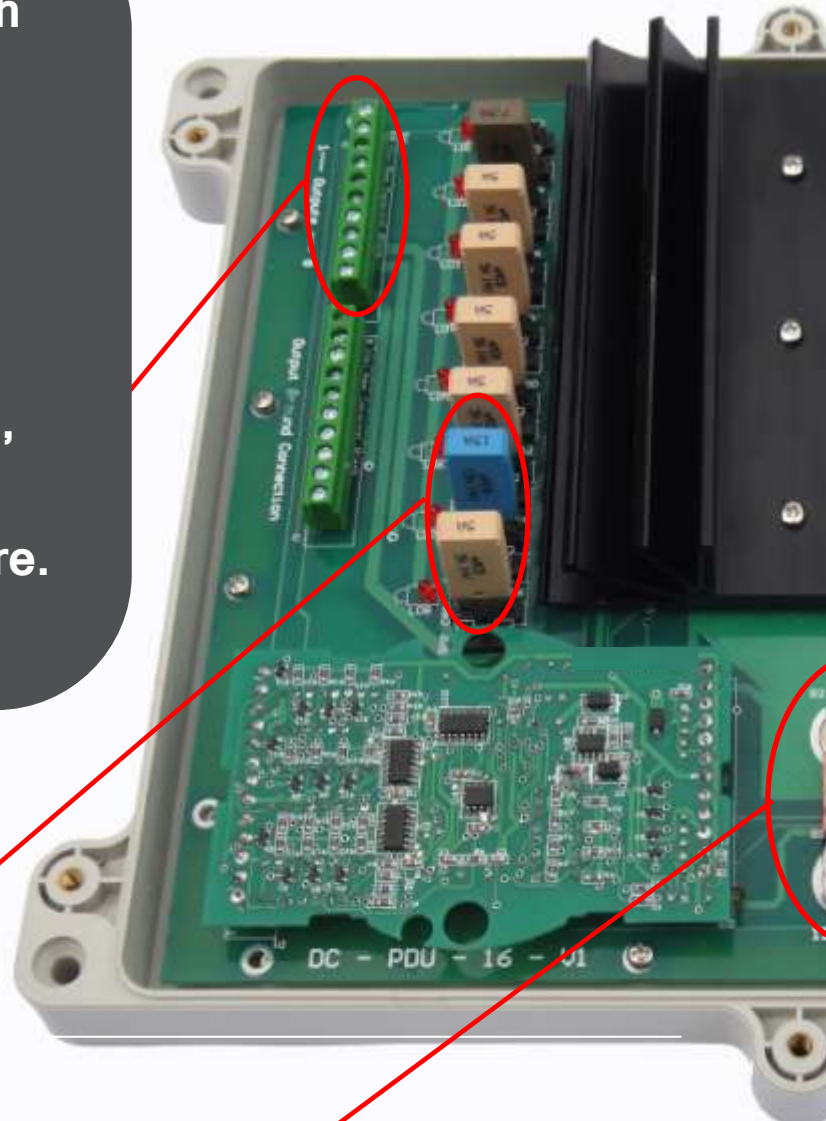
➔ 16 x Outputs, allow enough outputs to perform :  
DC power distribution  
Integration and control of other systems from one PDU, cost effectively.  
Systems such as trim tabs, sunroof, wipers, anchors, hatch lifters and many more.

Terminal block for fast connection of loads.

Standard mini-blade circuit protection, with built in emergency bypass socket. Allows upgrade of circuit breaker size, and sourcing of replacement parts, anywhere in the world, by any technician, without software.

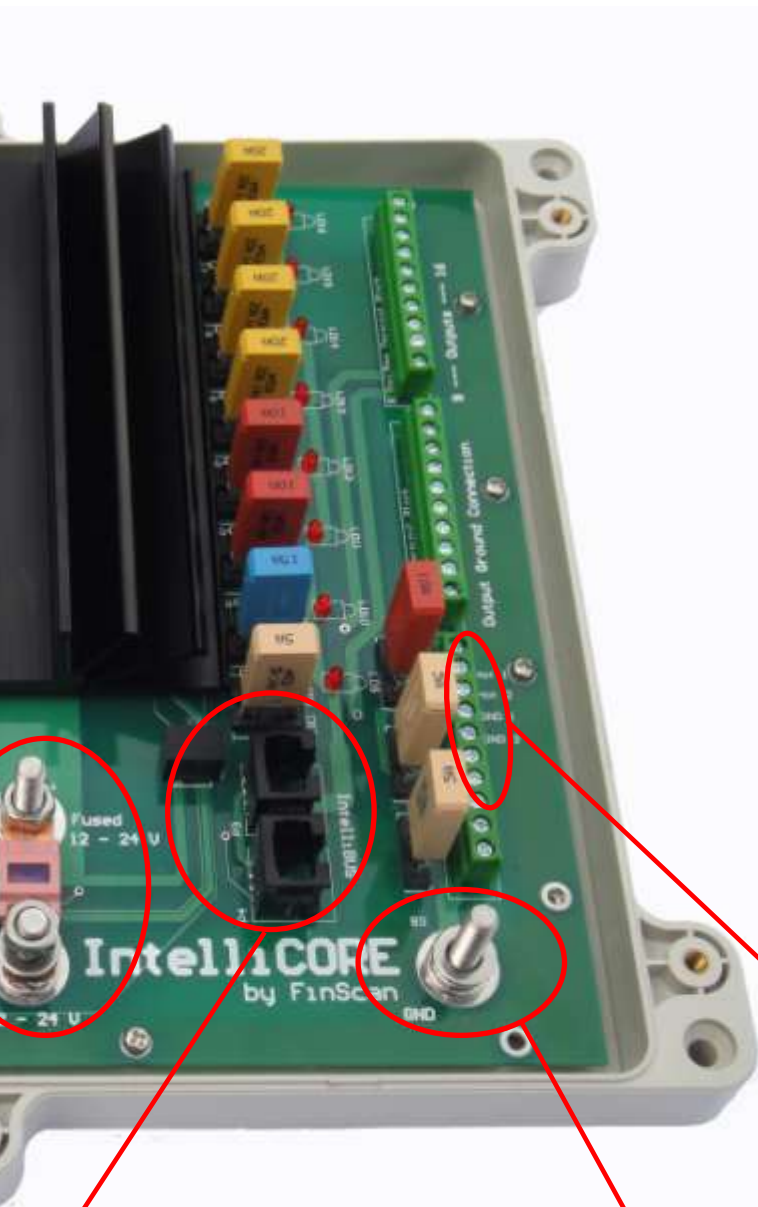
High current connection points for DC power supply, with built in fuse. Eliminates the need for external fusing or circuit breakers. Allows direct connection to supply.

“ONE CLICK” In connection communication power to components installation





# DC-PDU-16 MOSFET output



IntelliBUS supplies commands and device status to IntelliCOREs, speeds up time.

Internal ground distribution in PDU provides a supply and load connection for circuit ground wires. Eliminates the need for an external terminal block.



IP65 IntelliBUS connection.

Two Dedicated hot circuits to supply constant protected power to various systems, without consuming any of the 16 MOSFET outputs.

# AC Source Manager



- ➔ Accepts two AC sources
- ➔ Reverse polarity protected
- ➔ Auto OR Manual TXR
- ➔ AC supply source, voltage and current monitoring to touch screen.



General Specifications	
Voltage	90 - 240 Volts AC – single phase
Main Switch	MCB standard , RCD optional - variable rating
Circuit Breakers	MCB standard , RCD optional - variable rating
Number of AC sources	Up to 3
Maximum individual Source current	50 A
Operating Modes	Manual and/or Auto transfer
Control	Touchscreen controlled and monitored
Maximum Temperature	115°C
Output state indicator	Touchscreen monitored via IntelliBUS
Connection System	IntelliBUS RJ45 – IP65 rated
IP Rating Enclosure	IP65
IP Rating Connectors	IntelliBUS IP65 , Supply - Gland entry
Dimensions	L - 250 x W – 195 x H – 70

# AC-PDU-8 output

- ➔ Complete IP65 sealed unit
- ➔ Compact size
- ➔ 8 x CB protected Outputs
- ➔ Up to 30A per Output
- ➔ Optional dual split AC
- ➔ No external DC required



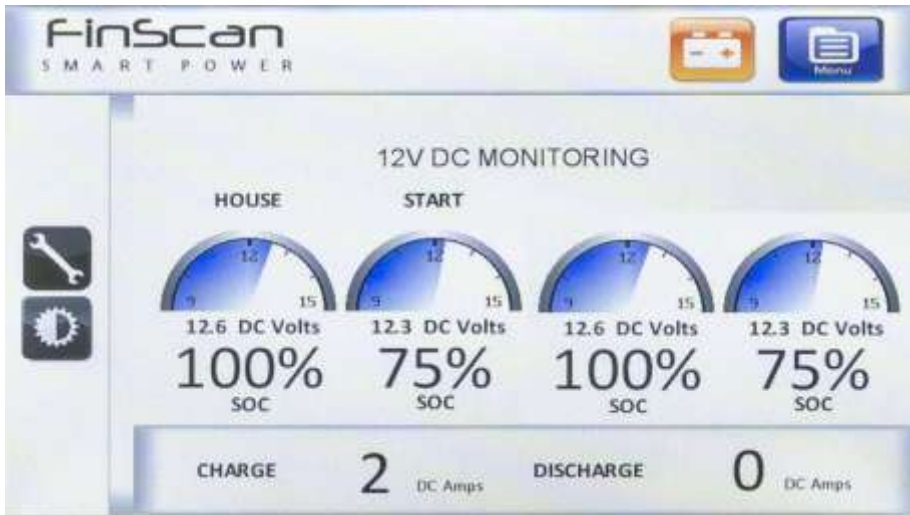
## General Specifications

Voltage	90 - 240 Volts AC
Main Switch	MCB standard , RCD optional - variable rating
Circuit Breakers	MCB standard , RCD optional - variable rating
Number of outputs	8
Maximum current of all circuits	80 A
Maximum individual circuit current	50A
Output technology	AC Contactor 20A standard or 50 A optional
Maximum Temperature	115°C
Output state indicator	LED on Each Contactor
Connection System	IntelliBUS RJ45 – IP65 rated
IP Rating Enclosure	IP65
IP Rating Connectors	IntelliBUS IP65 , Load and Supply - Gland entry
Dimensions	L - 270 x W – 350 x H – 70

# DC VOLTAGE monitor



- ➔ Monitors DC voltage
- ➔ Monitors 8 to 32 V DC
- ➔ 4 x Voltages per module
- ➔ Network to many displays
- ➔ Network multiple modules
- ➔ Display State of Charge



SINGLE  
OR  
MULTI DISPLAY



HELM DISPLAY

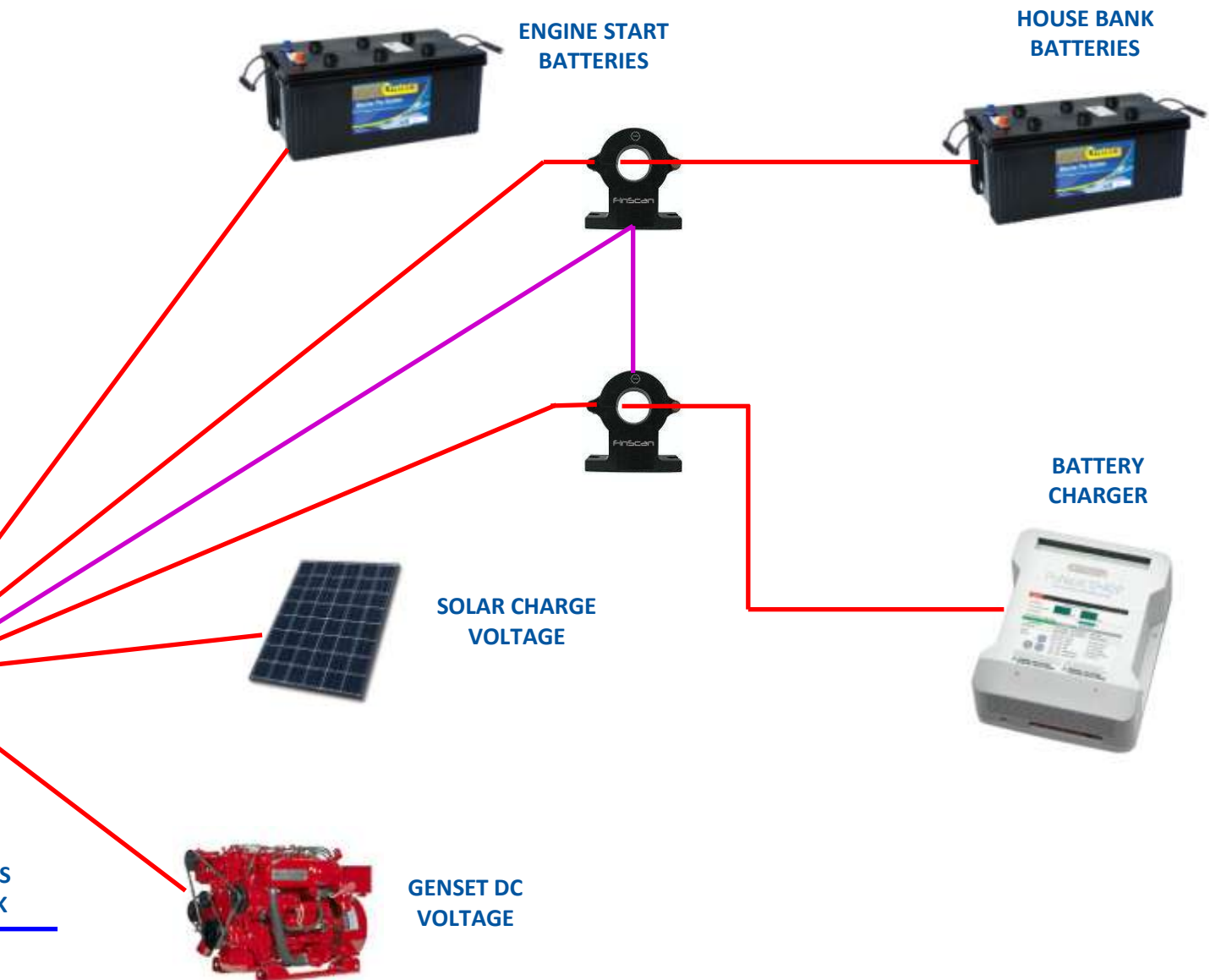


INTELLIBU  
NETWORK

# DC CURRENT monitor



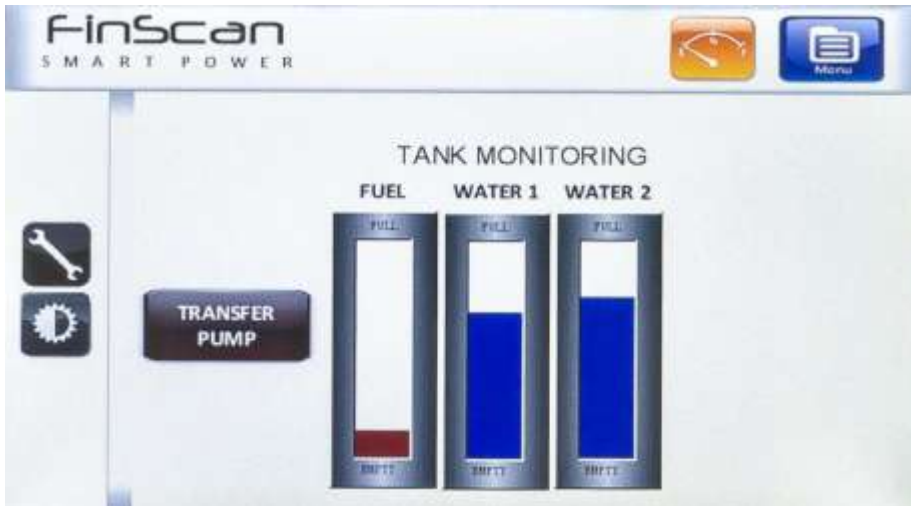
- ➔ Monitor Load and Charge
- ➔ Removable clamp sensor
- ➔ Network to many displays
- ➔ 1A to 200A range
- ➔ Display Amps and Amp Hours



# TANK LEVEL monitor



- ➔ Monitor up to 4 tank levels
- ➔ Standalone or Network
- ➔ Operates on 12 to 24 V DC
- ➔ Works with resistive and digital sensors



SINGLE OR  
MULTI DISPLAY



INTELLIBUS  
NETWORK



HELM DISPLAY



THE POWER OF CONNECTION



## PLUG and PLAY

for faster installation

As an OEM supplier of power solutions to boat builders around the world, FinScan understands the importance of a fast, snap together cabling system, that makes installation simple and **REDUCES BUILD TIME**.

The advanced INTELLICORE cabling system delivers protected power and communications. System components and displays are linked, from one sealed RJ45 cable, with no room for error !

# INTERIOR switching



## *Switching made easy*

INTERIOR switching plays an important role on any type of yacht. Yet, it is one of the most overlooked aspects of distributed power solutions. Too often, the designers and boat builders are left with the challenging task of finding suitable interior switches to work with their distributed power system, and dimming arrangements.

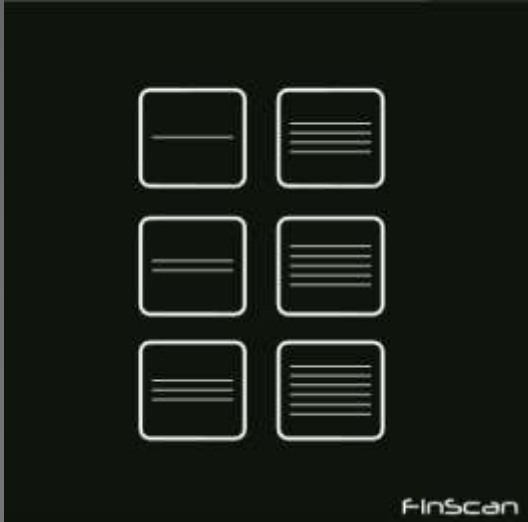
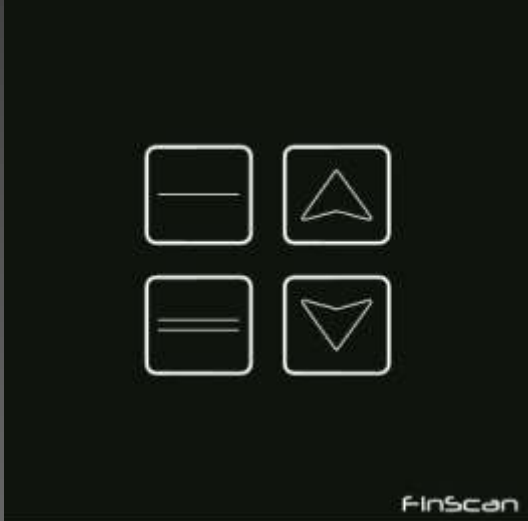
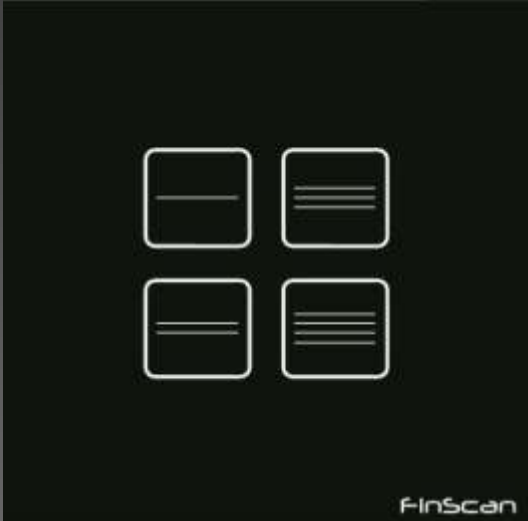
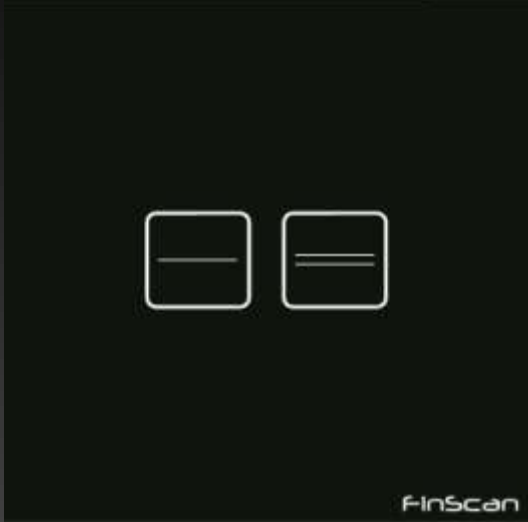
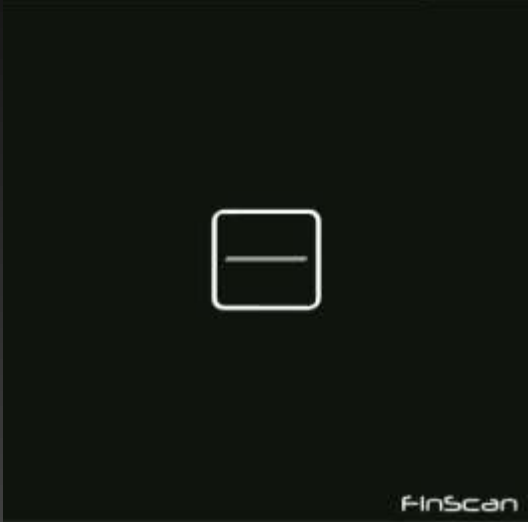
In many cases, interior switching is performed by turning on power to a circuit with the distributed power system, then cutting power to the circuit to turn the lights off with individual cabin switches. This often leads to confusion in the cabins if the master power is left off, with no one really knowing if power is on or off in a cabin.

FinScan's GTP series, glass touch panel switching range, are an impressive glass touch switch that will complement any contemporary yacht interior. With auto dimming backlight, the switches are visible during the day, and visible during the night without becoming annoying.

Enjoy world class interior switching, with easy, integrated, plug and play design.



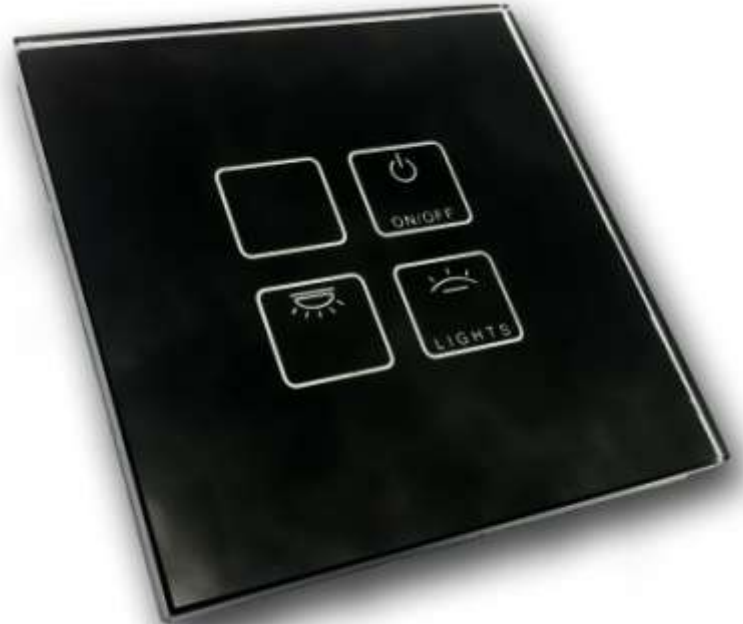
# GTP series range



# GTP series switches



- ➔ **Stylish**
- ➔ **Functional**
- ➔ **No moving parts**
- ➔ **Backlit for night use**



## Features include :

1. Solid 4mm Glass faceplate
2. Available in 1 , 2, 4 , and 6 gang configuration.
3. Solid state, normally open , momentary contacts.
4. Vivid white LED backlight.
5. Blue LED backlight for switch activation.
6. Night mode auto dimming of button backlight after inactivity, with auto wake on button press.
7. Connection to FinScan , or third party controller.
8. Customisation of button labels for Minimum order quantity.

## Included in Package :

1. GTP switch series base and faceplate
2. Power supply cable and connector
3. Switch contact cable and connector

## General Specifications

General Specifications	
Voltage	10 – 28 Volts DC
Contacts	Solid state
Faceplate	Glass 4mm
Maximum number of gangs	6
Fixing method	Screw from front
Output state indicator	LED at each node
Connection System	High density PCB connect

# SIU—16 switch input

- ➔ ONE click connect
- ➔ Cabin switching
- ➔ GTP or Other type
- ➔ Direct PDU switching



The Switch Input Unit - SIU- 16 , allows up to 16 momentary switch's or digital inputs to be connected to it, to perform switching, control, dimming tasks or monitoring , on the IntelliCORE network of PDU – 16 's and Touchscreens.

The SIU- 16 is plug and play with the IntelliBUS system. It obtains all power and communication requirements from a One – click IntelliBUS RJ 45 connection.

The SIU-16 is available as a standalone unit , or built into , and housed in the PDU – 16.

## Included in Package :

1. SIU – 16 switch input unit
2. IntelliBUS – RJ45 connection
3. Terminal blocks for switch connection

General Specifications	
Voltage	10 – 24 Volts DC
Maximum number of nodes	100
Number of inputs per node	16
Input technology	Wet Contact
Maximum Temperature	90°C
Indicators	Heartbeat and communications
Connection System	Terminal block
Dimensions	100mm x 69mm x 25mm

# FinScan

[www.finscan.com.au](http://www.finscan.com.au)